

Paver Coat - 1K WB ACRYLIC

Sheenlac Paver coat-1K WB ACRYLIC is a one pack water based self-crosslinking acrylic coating for direct application over prepared concrete / cement floor and stone types. It can be used for interior & exterior applications. The product will deliver superior durability and aesthetic appearance.

PRODUCT BENEFITS



- High exterior durability
- Self-priming
- Fast drying and Cure
- Low dirt pickup / Easy to clean
- Excellent Flow & Leveling



PRODUCT FEATURES

AVAILABLE PACK SIZES



COVERAGE



70 Sq.ft / litre in 2 coats
under normal conditions

*Actual coverage may vary due to factors such as method and condition of application, surface roughness and porosity and weather conditions.

RECOMMENDED USE

Residential car park / Interlock concrete block; Pedestrian walkways & Stairways; Patios & porches; Terrace and vertical walls*; Commercial car park area

* To be applied only over recommended primers

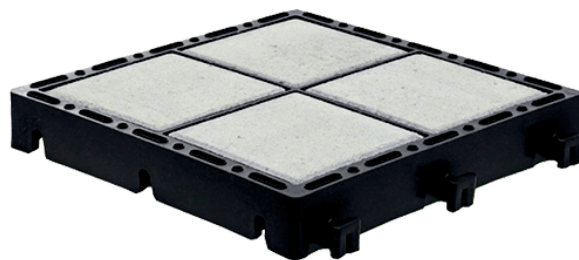


DRYING TIME



Technical Data:

Colour	: White & Colors
Gloss / Sheen	: Rich sheen
Method of Application	: Air Spray, Brush, Roller
Theoretical Coverage	: 70 Sq.Ft per litre at 80 μ m dry film thickness
Dry Film Thickness	: Minimum 80 μ m to be developed
Dry Time (25° C / 50% RH)*	: To Touch: 2 Hours To walk on: min 12 Hours Wheeled Traffic: 48 hours
Stability of thinned Paint	: 24 Hrs



*Recoat and drying period may vary under different conditions

SURFACE PREPARATION

The surface to be applied needs to be clean and free from dust, dirt, oil or greasy material, laitance, organic debris, etc. If any, it should be removed using wire brushing or power tool cleaning and clean the surface using fresh water and appropriate surface cleaners.

Algae or fungus needs to be cleaned using house hold bleach and wash with fresh water later. Any cracks or crevices present should be filled with suitable filling compounds before application. Any dampness issues need to be arrested appropriately before application.

After cleaning, sand the surface to remove any smoothness or glossy areas using wire brush or power tool sanding. Wash with fresh water to remove the dust, allow the surface to dry.

New concrete, masonry or plaster: The new concrete should have matured at least 30 days in ambient conditions for application of Sheenlac Paver coat -1K WB ACRYLIC.

Coating over existing aged coating: In ideal scenario the aged existing coating should be removed before application of Sheenlac Paver coat-1K WB ACRYLIC. If the situations where existing coating cannot be removed, the adhesion of the existing coating on to the substrate needs to be assessed properly and the loose flaky materials need to be removed using appropriate methods before applying Sheenlac Paver coat-1K WB ACRYLIC. In the event where adhesion fail, the existing coating needs to be completely removed before applying Sheenlac Paver coat-1K WB ACRYLIC.

APPLICATION DATA

Stir the paint thoroughly. Use potable water for thinning and don't over thin the paint more than the recommended levels.

Apply a self-priming coat of Sheenlac Paver coat -1K WB ACRYLIC, by diluting with 30-50% water. Allow it to dry for minimum 5-6 hours (25 Deg C / 50% RH)

Apply further coat of Sheenlac Paver coat -1K WB ACRYLIC at 10-20% dilution using standard brush, roller or spray.

One more optional coat may be applied depending on the hiding and colour requirements.

Note: This product is not intended to use for heavy motor vehicle traffic, water-logging, or immersion services and where acid/alkali spillages are likely. Care should be taken when moving heavy motor vehicle, portable cranes etc. over the coated surface.

Application precautions:

- While application ensure that surface temperature and air temperature are not below 10 °C or above 45 °C
- Should not over thin the paint above the recommended dilution levels
- Stir the paint properly before use.
- When exceeding over coating interval or exposed to sunlight for a long time, proper surface preparation should be necessary to ensure inter-coat adhesion

Storage and Transportation:

Do not store or transport the containers under direct sunlight or at elevated temperatures. Store the container in an upright position in order to avoid any leakage or damage.

For product related queries, feedback and quality complaints, please contact:

Customer care: +91 8300 03 04 04

E-mail: ccc@sheenlac.in | Visit us: www.sheenlac.in

Regd. Office: Sheenlac Paints Ltd.

Old No. 109B, New No. 124, Developed Plots, SIDCO Industrial Estate, Ambattur, Chennai - 600098. Tamil Nadu, INDIA.

Pack Sizes: 1L, 4L, 10L and 20L packs.

Shelf Life: Two years from the date of manufacturing in original tightly closed containers stored away from direct sunlight and excessive heat.

Post application care:

- For the better performance of the floor coat ensure proper washing and cleaning of all algal and fungal growth, if any, at regular intervals of six months.
- Ensure that the wheels of the vehicle doesn't have any sharp object or high abrasive material like sand or stone chips sticking which can damage coated floors.
- Mop the floor regularly and avoid the use of acids for cleaning purpose
- Never water wash the coated floor when the floor temperature exceeds 45°C

Safety features:

- Refer the MSDS of the product which is available on request.
- Keep out of reach of children. Use personal protective equipment's like goggles, face masks, gloves.
- In case of contact with eyes or skin, immediately rinse or wash appropriately using plenty of water and seek medical advice if any sort of irritation persists.
- Do not inhale the vapour or spray.
- In case of ingestion seek immediate medical attention.

All information mentioned in this data sheet are based on tests conducted in laboratory conditions. Results may vary depending upon atmospheric conditions, application methodologies and substrates. We reserve the right to alter the given data without notice.